

**Internal Quality Assurance Cell**

**STUDENT SATISFACTION SURVEY (2019-2020)**

IQAC conducted an annual survey over the campus facilities available. Students are requested to respond to the on-line survey conducted. “Google form” ids utilized for the purpose. Before hand a mail correspondence was initiated through the head of the department in this regard. Under the guidance of the HoDs/ Tutors concerned, IQAC successfully conducted the survey for the academic year 2019-20. The survey is belated due to the pandemic situation prevailing. The survey included I, II and III year students of the UG programmes run in the institution. This exercise was conducted between 24/11/2020 to 26/11/2020. The findings are summarized and presented here under.

- Number of students participated:
  - I Year : 517
  - II Year : 683
  - III Year : 797
- Metrics in the feedback
  - Classrooms / Lecture halls
  - Laboratories
  - Smart Classrooms, ICT Materials
  - Library facilities
  - Skill Development Initiatives
  - Training and Placement
  - Sports facilities
  - Food Court
  - Hostel Amenities
  - Transportation Facilities
  - Campus Ambience

**Findings:**

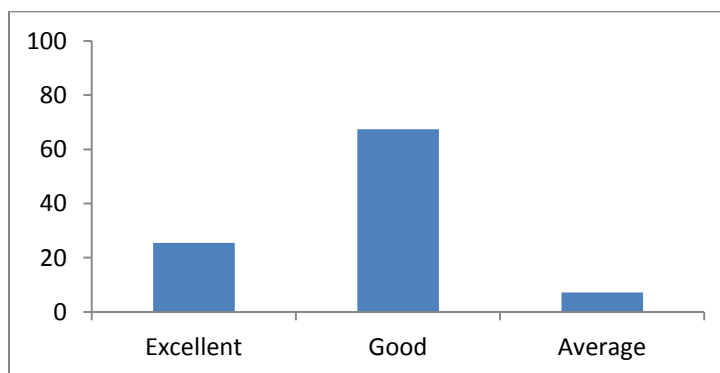
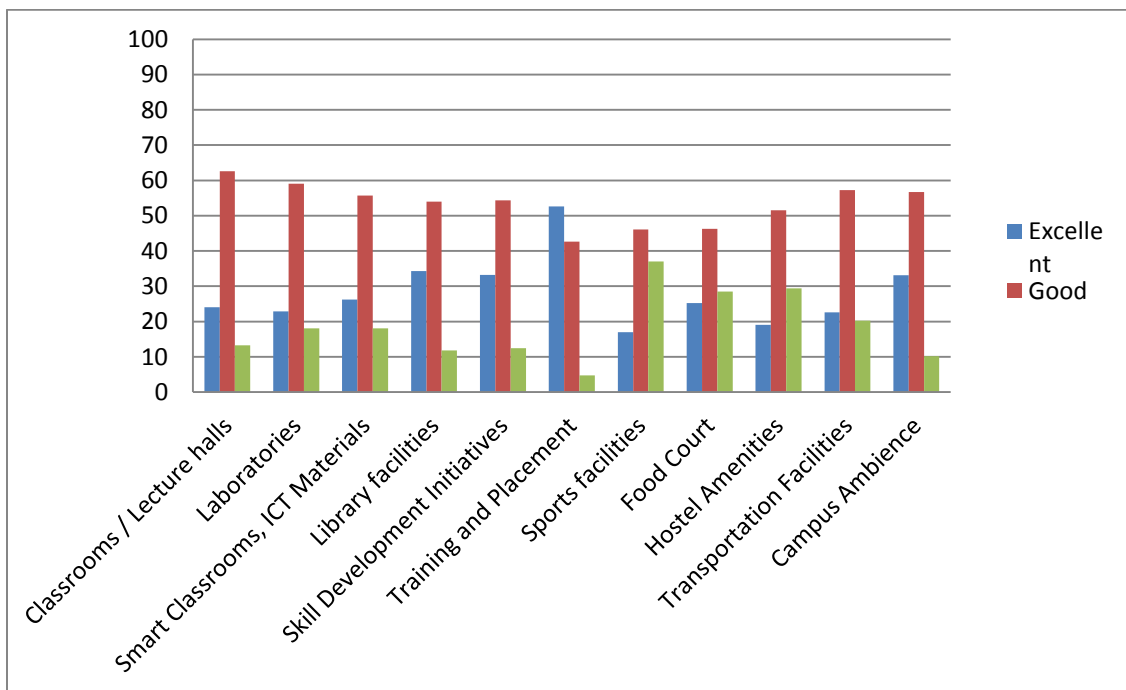
The findings of the survey namely the number of students participated programme wise, percentage of students rated Excellent, Good and Average on the metrics mentioned above and Overall satisfaction percentage batch wise is as mentioned (Batch wise).

# STUDENT SATISFACTION SURVEY (2019-2020)

Batch: 2017-2021

## Number of Students participated

<b>Auto</b>	<b>Civil</b>	<b>Mech</b>	<b>CSE</b>	<b>IT</b>	<b>ECE</b>	<b>EEE</b>	<b>EIE</b>	<b>ETE</b>	<b>Total</b>
59	94	103	80	87	130	136	71	37	797



### **Overall Satisfaction Percentage**

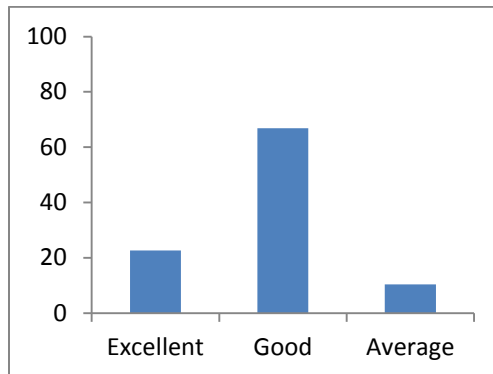
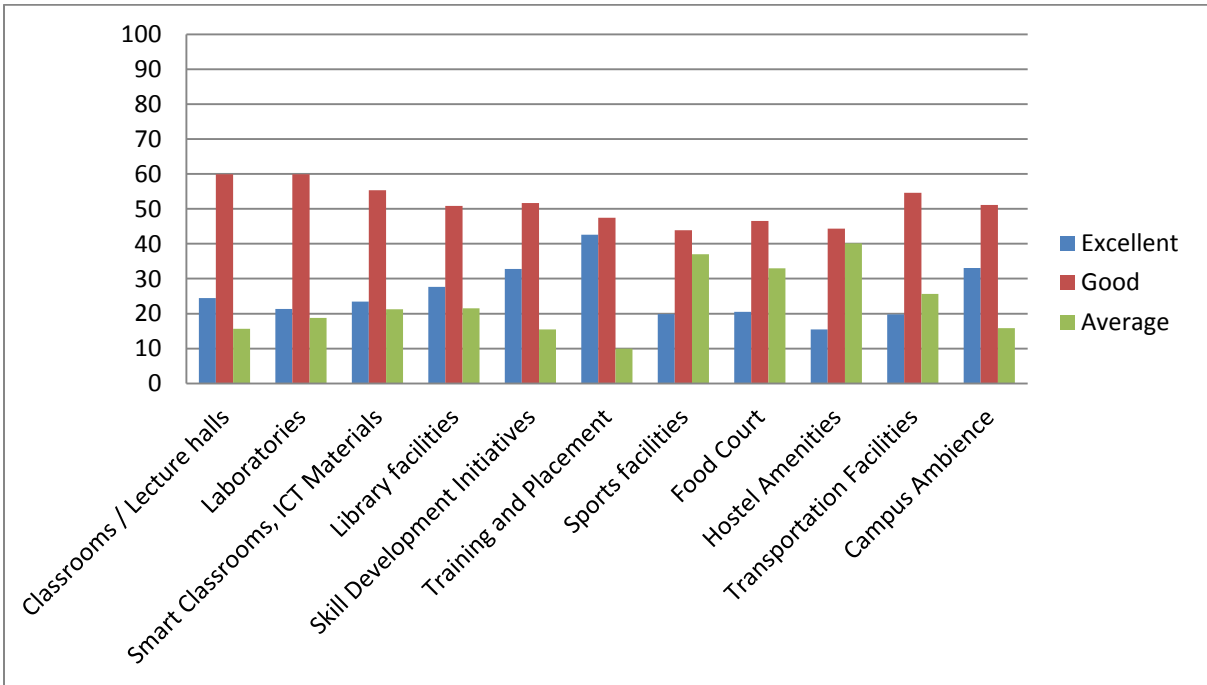
	<b>Excellent</b>	<b>Good</b>	<b>Average</b>
<b>Classrooms / Lecture halls</b>	192	499	106
<b>Laboratories</b>	182	471	144
<b>Smart Classrooms, ICT Materials</b>	209	444	144
<b>Library facilities</b>	273	430	94
<b>Skill Development Initiatives</b>	265	433	99
<b>Training and Placement</b>	419	340	38
<b>Sports facilities</b>	135	367	295
<b>Food Court</b>	201	369	227
<b>Hostel Amenities</b>	152	411	234
<b>Transportation Facilities</b>	180	456	161
<b>Campus Ambience</b>	264	452	81

# STUDENT SATISFACTION SURVEY (2019-2020)

Batch: 2018-2022

## Number of Students participated

<b>Auto</b>	<b>Civil</b>	<b>Mech</b>	<b>CSE</b>	<b>IT</b>	<b>ECE</b>	<b>EEE</b>	<b>EIE</b>	<b>ETE</b>	<b>Total</b>
36	44	142	124	103	132	75	16	11	683



### **Overall Satisfaction Percentage**

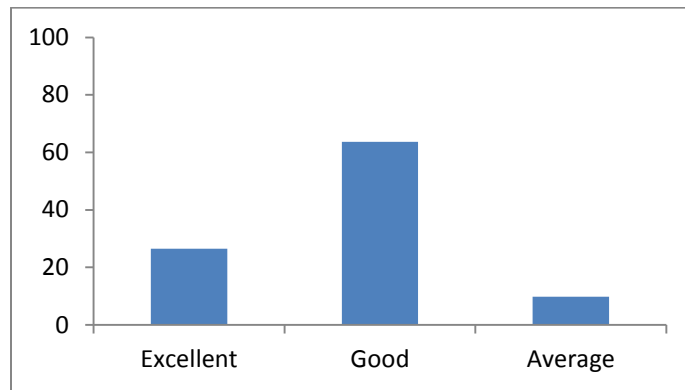
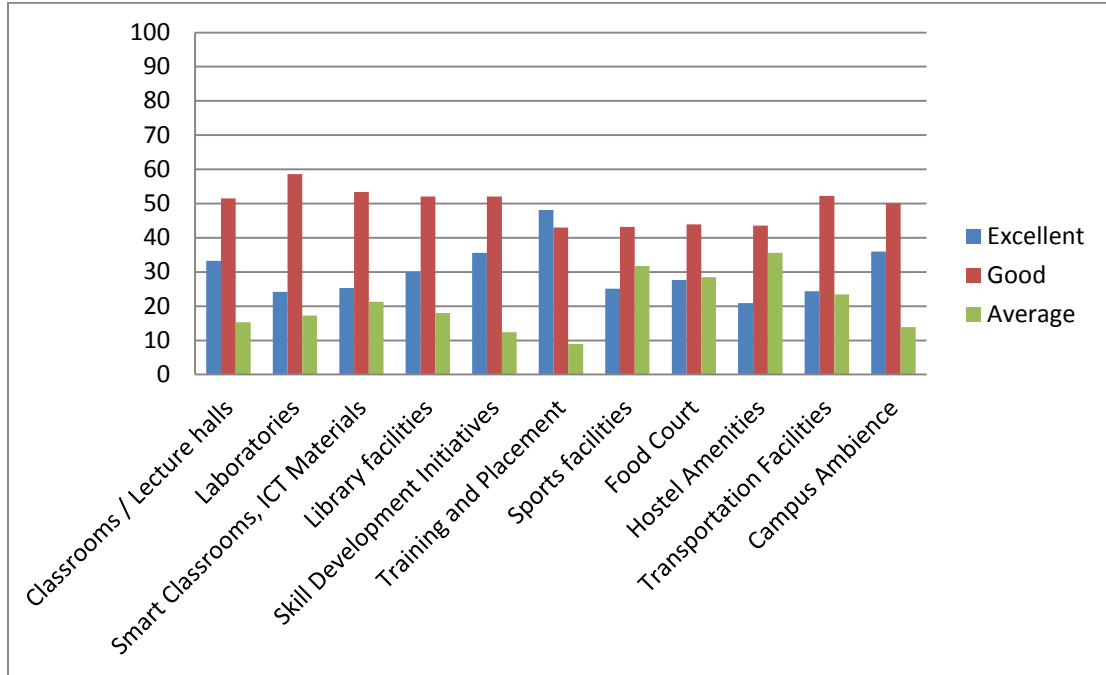
	<b>Excellent</b>	<b>Good</b>	<b>Average</b>
<b>Classrooms / Lecture halls</b>	167	409	107
<b>Laboratories</b>	146	409	128
<b>Smart Classrooms, ICT Materials</b>	160	378	145
<b>Library facilities</b>	189	347	147
<b>Skill Development Initiatives</b>	224	353	106
<b>Training and Placement</b>	291	324	68
<b>Sports facilities</b>	136	300	253
<b>Food Court</b>	140	318	225
<b>Hostel Amenities</b>	106	303	274
<b>Transportation Facilities</b>	135	373	175
<b>Campus Ambience</b>	226	349	108

# STUDENT SATISFACTION SURVEY (2019-2020)

Batch: 2019-2023

## Number of Students participated

<b>Auto</b>	<b>Civil</b>	<b>Mech</b>	<b>CSE</b>	<b>IT</b>	<b>ECE</b>	<b>EEE</b>	<b>EIE</b>	<b>ETE</b>	<b>Total</b>
16	19	28	123	81	154	77	-	19	517



### **Overall Satisfaction Percentage**

	<b>Excellent</b>	<b>Good</b>	<b>Average</b>
<b>Classrooms / Lecture halls</b>	172	266	79
<b>Laboratories</b>	125	303	89
<b>Smart Classrooms, ICT Materials</b>	131	276	110
<b>Library facilities</b>	155	269	93
<b>Skill Development Initiatives</b>	184	269	64
<b>Training and Placement</b>	249	222	46
<b>Sports facilities</b>	130	223	164
<b>Food Court</b>	143	227	147
<b>Hostel Amenities</b>	108	225	184
<b>Transportation Facilities</b>	126	270	121
<b>Campus Ambience</b>	186	259	72